

We are going to visit the



HENRY B. PLANT
M U S E U M



Note for parents, teachers and caregivers

The following story is intended to be reviewed at school or home prior to your visit to the museum.

It will prepare students, especially those who may experience autism spectrum disorders, sensory or developmental challenges, for their visit to the museum.

If you tour the museum with a docent, the docent will show the students areas where they can sit and watch an informational video, or sit and write their names in the guest book, and experience what a typical hotel guest might have, back in the days when the Tampa Bay Hotel was in operation.

Sensory notes:

- Soft classical music is usually playing throughout the building.
- There may be shifts from bright light coming through glass in doors or windows to darker areas.
- Several rooms have floor registers for the air conditioning and heating system. The air may be forceful, and you may want to be watchful for children who might find it stimulating.
- If there is a rope across the gift shop, it means there is no one available to staff the shop at that time. You may want to ask prior to beginning the tour if the shop will be open while your group is there, or not.
- If you care for individuals who are fascinated by fire alarms or extinguishers, please note there are several throughout the museum. The fire alarms have been known to be activated unexpectedly by smoke alarms in other locations. If this happens, the horn and flashers will be very loud and bright. These are usually posted at emergency exit locations.
- On guided tours with multiple groups touring the museum at the same time, there may be a delay in transitioning from one room to the next. Students may need to be prepared to wait just a few minutes until the next room is available.

If we come on a bus, we will follow instructions on where to go.



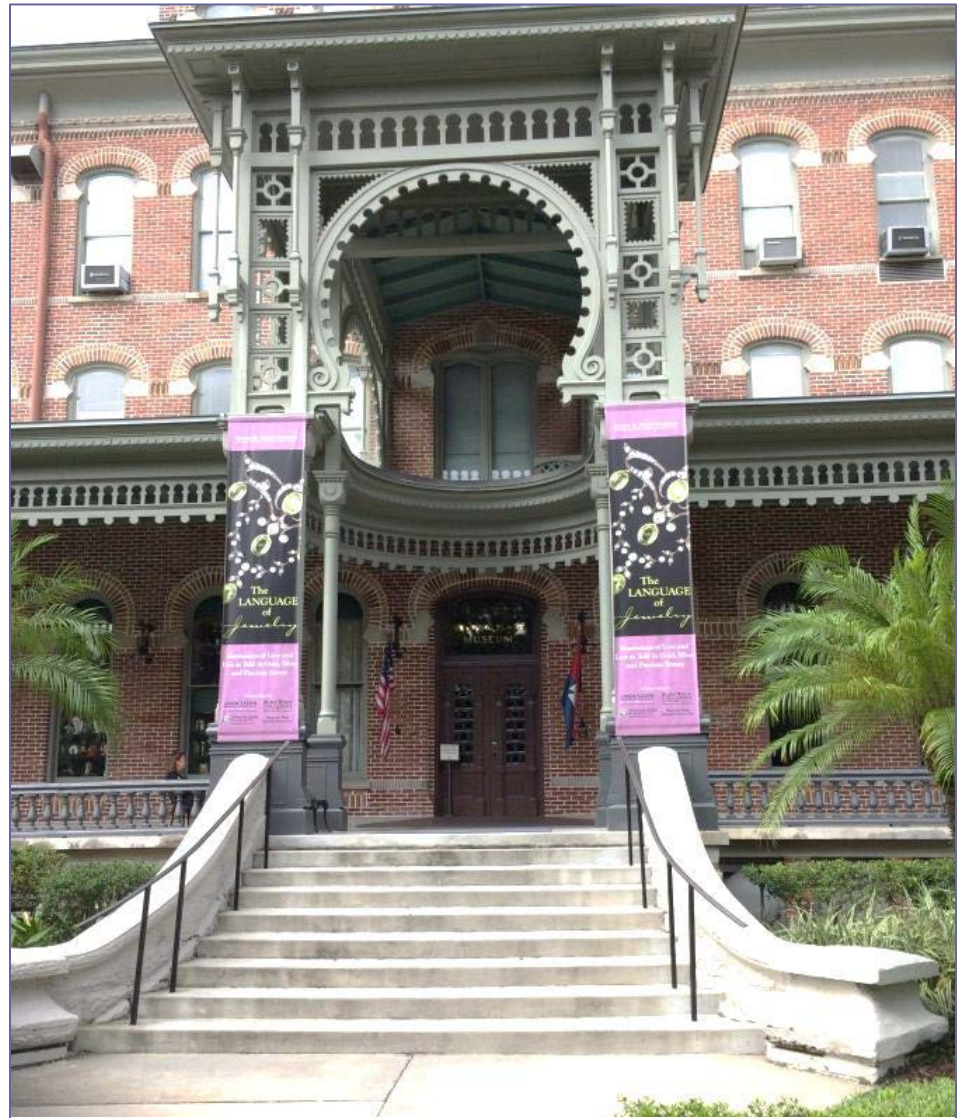
If we come in a car, we will park here.

The parking attendant will tell us what we need to do. We will walk toward this sign.



This is the entrance most people use to enter the museum.

If anyone in our group uses a wheelchair, they will go in a different entrance. Someone from the museum will help.

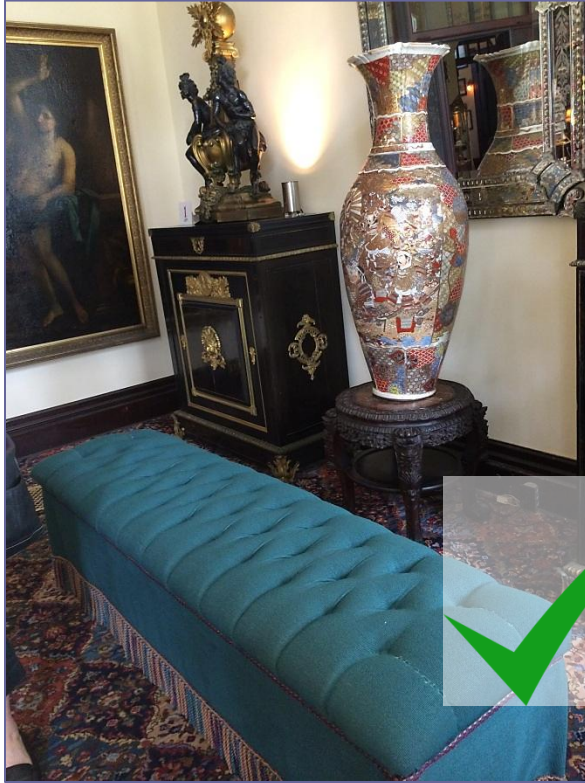




There will be a nice person at the desk who will greet us.



No food or drinks are allowed inside the museum.
We will keep our food and drinks in the lobby.



OK to sit on this!

If we have to wait to get in, we can sit on this seat or one of the chairs in the lobby.



What will we see? A lot of old fashioned furniture and things. The light will be very dim inside, so sometimes we will see bright sunlight coming through windows.



What will we hear? Soft classical music, the voice on our listening wand, other people talking softly. If the fire alarm goes off we will follow instructions.



What will we smell? The Museum is in a very old building, and many objects on display are very old. We might smell a slight aroma of “old things”, but it will be pleasant. We will be OK.



What can we touch? Nothing on display – only things that the guide tells us are OK to touch.

What will we feel? Some rooms have air conditioner vents in the floor. There will be strong air blowing from these vents.



How long will it take? Every visit is different. We will spend a few minutes in each room learning about the way people lived a long time ago.

In museums, the people who guide groups through the displays are called “docents”.

Say the word this way: **DO-sent**

If our group has a docent, he or she will show us where to go, and explain what we will see in each room.



If we walk around on our own, we may take audio wands with us.

This is one type of audio wand. We will hold it up to our ear to listen.



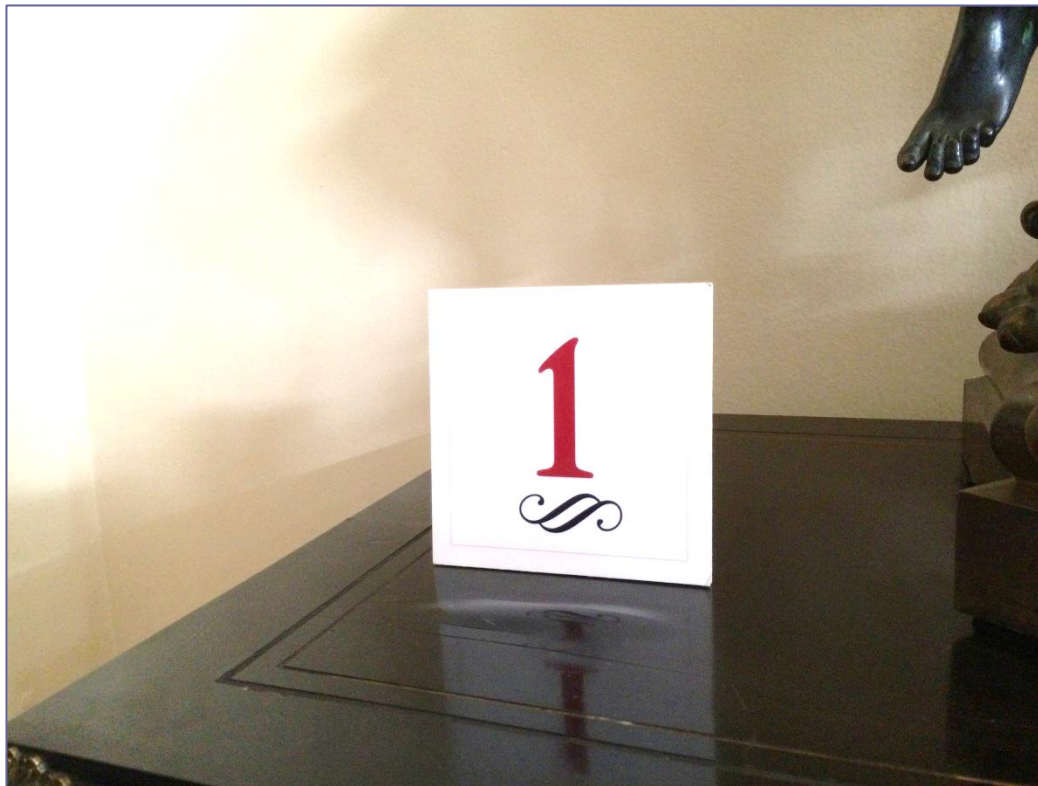


Another type of audio wand has two ways to listen. We can hold it up to our ear, just like the first kind.

Another way to listen is with our own ear buds that we bring to the museum. We can plug them in the side of the audio wand.



Touch the listening wand with the number you see on various displays and you will hear information about objects in that display.



Taking pictures is OK, but please turn off the flash.

Light from flash fades colors in fabrics and paintings.



We will not touch anything until the docent tells us it is OK.



We will not sit on any chairs or other furniture when we see a rope across them.

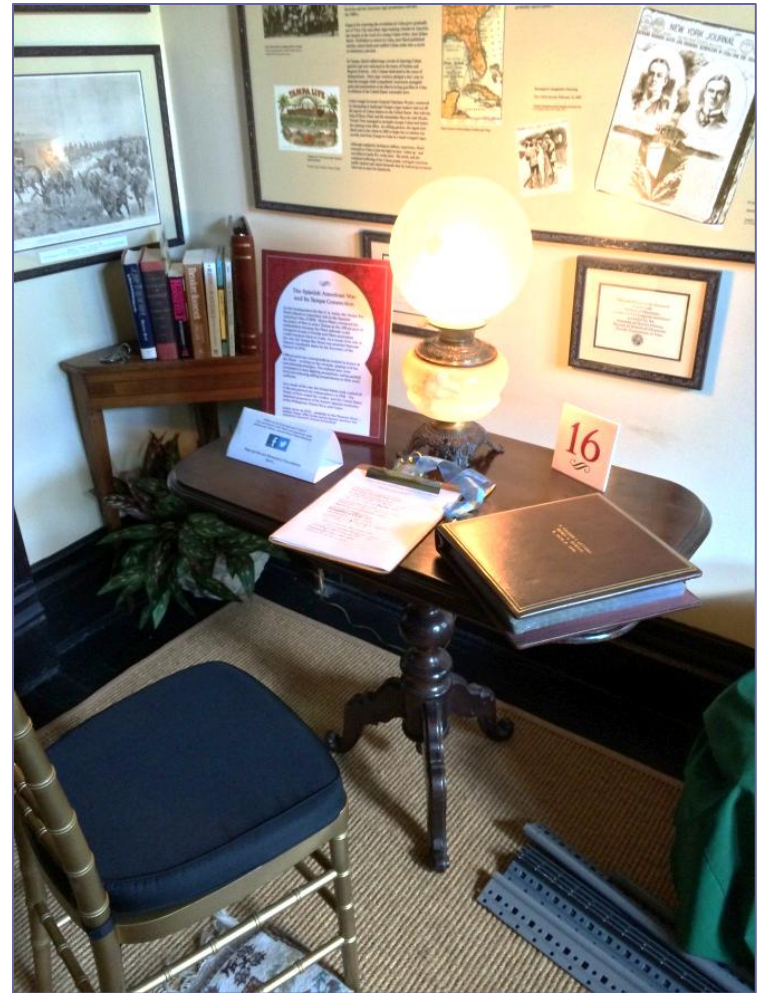




OK to touch!

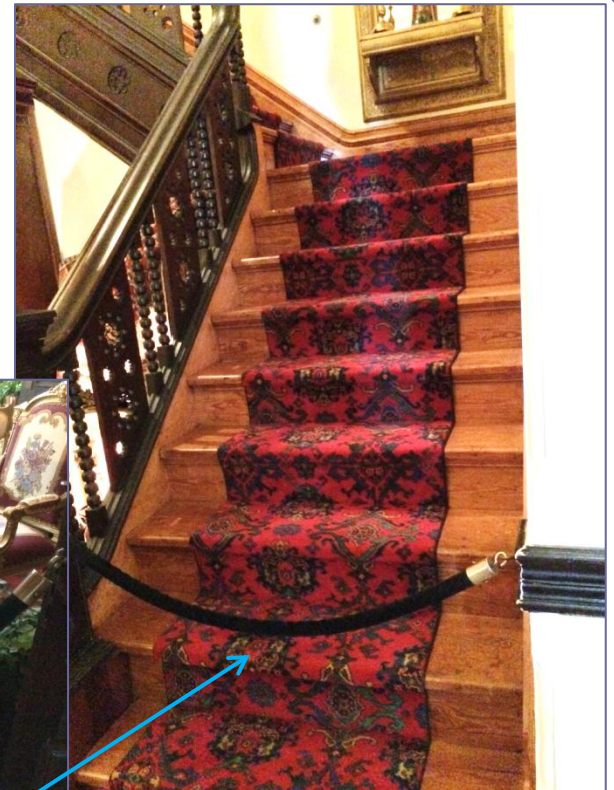
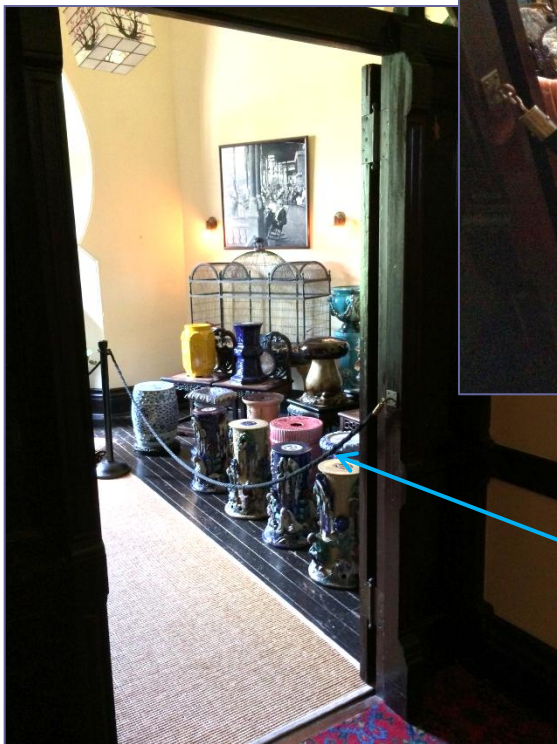


It is OK to sit on these chairs.



We will not walk up stairs or enter rooms where we see ropes.

Some rooms are OK to walk in, but we can't go across or touch anything beyond the rope.



Sometimes we will see doors that are closed and have signs on them. One might say “DIRECTOR”, or another might say, “MUSEUM STAFF OFFICES”.

We will not open these doors or go in those rooms. They are not part of the museum exhibits. They are rooms where people are working, doing their jobs!

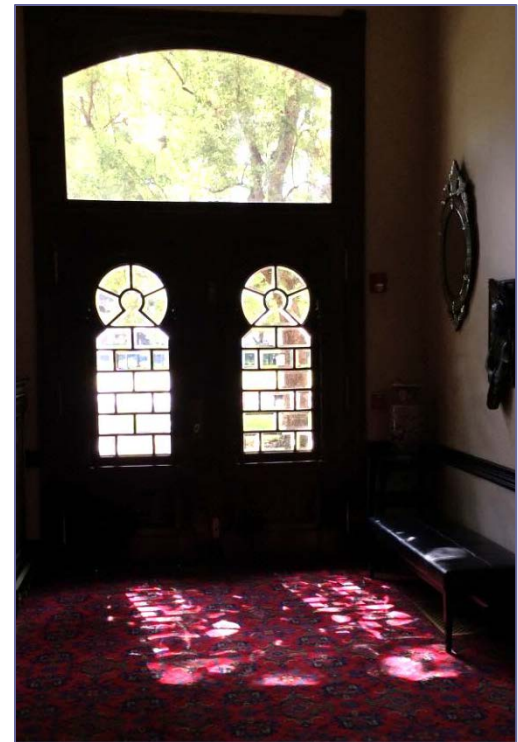


We will enter and exit the museum only through the lobby, except in an emergency.

We will not open any of these doors unless we are given instructions to open them.

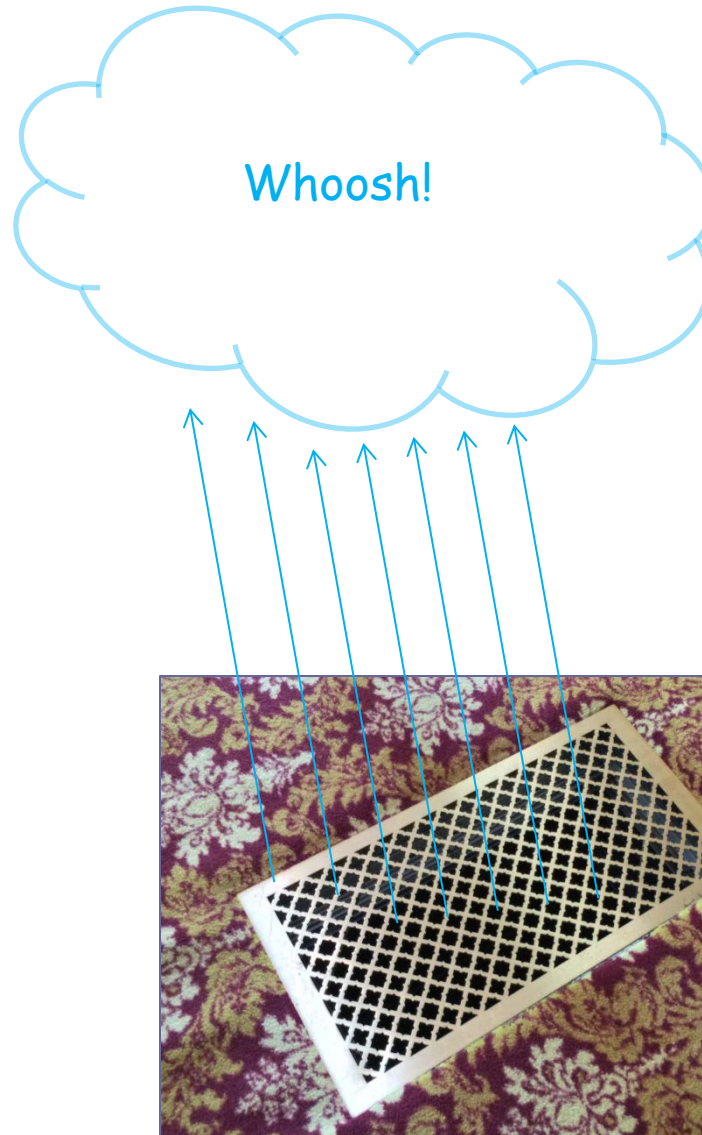


**NO
EXIT**



In some rooms, the air blows from vents in the floor.

The air will feel cool in hot weather, and will feel warm in cool weather.



Fire extinguishers & alarm are only for emergencies!

The fire alarm says “PULL DOWN’ but we do not pull it down unless there is a real emergency.

If the alarm goes off, there will be bright flashing lights and loud alarm sounds.

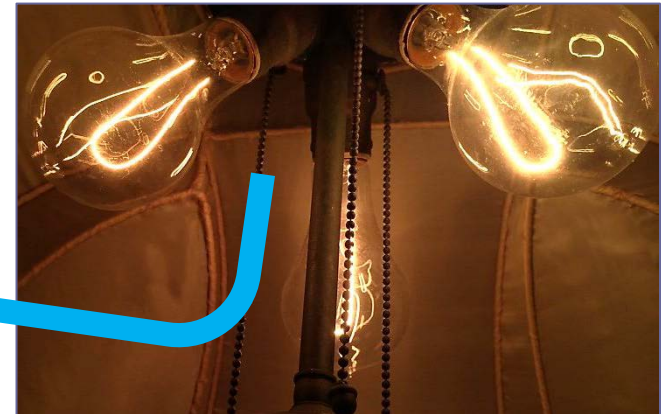
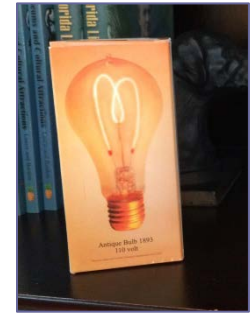
We will follow instructions if that happens.

Most of the time when people visit the museum, there is no alarm. Everything is OK!



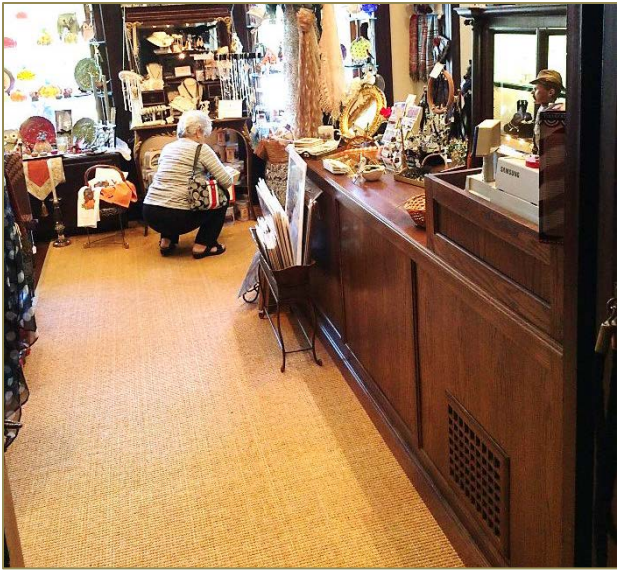
Why is it so dark in the museum?

Low lights keep colors bright, and the bulbs are the same kind that were used a very long time ago.



One room has stuffed animals on the walls. There is a stuffed bobcat on a chair. The animals are not alive. They will not move.





Gift shop is open



Be careful!



Gift shop is closed.
We can come again another time.

When we are all through with our visit to the Henry B. Plant Museum, it will be time to go.

We will say goodbye and thank you to the nice people at the museum.

We will follow instructions for going outside to the bus or car.

Everyone at the museum will be pleased that we did such a good job while we visited!

We will be happy that we learned a lot about life in Tampa so many years ago. History is so interesting when we can see how people lived a long time before we were born!

Created for



by

The University of South Florida
Center for Autism and Related Disabilities

1-800-333-4530

813-974-2532

<http://card-usf.fmhi.usf.edu>



Florida's First Choice for Autism Support

